



The Vehicle Scheduling System

Optimizing the Quality of Handling Services

Accompanying the rapid expansion of the air traffic market is a marked rise in quality expectations of airport services in the apron area. As the density of air traffic volume intensifies, so too do the demands made of the resource allocation managers. Subject to acute time pressure, they are required to coordinate the deployment of vehicles and heavy equipment, such as boarding walkways for aircraft handling and clearance and react quickly to alterations to schedules.

As a result, erroneous decisions can result in unfortunate delays. In order to ensure that your scheduling managers always maintain an overview of the current and expected resource allocations, **AirIT** has developed the **Vehicle Scheduling System - VESS** that makes a decisive contribution to enhancing the quality and efficiency of airport handling services.

Stress-Free Decision-Making Process

In developing **VESS**, **AirIT** is offering you a turnkey solution that will lend your scheduling managers essential support in the efficient deployment of vehicles and heavy equipment within the range of flight-related services.

In contrast to the conventional and still widespread "island" solutions, **VESS** is characterized by its open architecture. User-friendly to operate, **VESS** facilitates the link-up to databases within the central database system and existing operative subsystems.

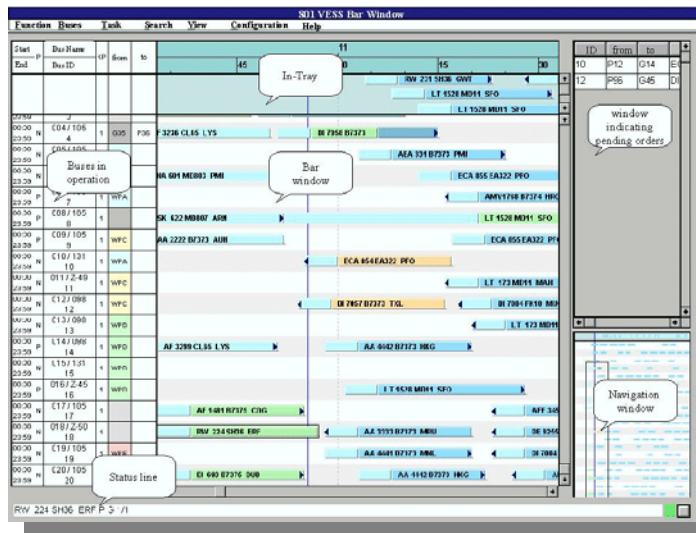
The ergonomically designed graphical user-interface provides scheduling managers with an overview of the heavy equipment deployed by displaying all resource allocations in clear and systematic Gantt style bar charts. Any changes can be entered with a mouse

in a familiar Drag & Drop environment. Under the same principle, **VESS** supervises the processing of orders by means of a bar chart, which displays the status of each order using a color code and thus ensures automatically that orders are executed on time.

To address the specific working situation of the scheduling manager at the airport, which depending on the season, is often characterized by the need to take rapid decisions under great time pressure, we have equipped this system with two special features. **VESS** automatically proposes possible order allocations that can be accepted with or without minor modifications. In choosing one or more scheduling proposals, the scheduling manager is assisted by the display of capacity utilization curves that illustrate the current and future resource allocation situation.



By virtue of its link-up to the relevant databases in the airport's system architecture, **VESS** automatically registers both information updates from the central database and scheduling changes effected by other **VESS** operators, and performs an update of the information displayed at each workplace. The multiple manual inputs usually associated with "island" solutions become unnecessary, leaving the operator more time to concentrate on the key decisions and tasks.



VESS Features at a Glance

With **VESS**, **AirIT** has developed a vehicle scheduling system, which, by virtue of its open architecture, can easily be integrated into the most diverse environments and easily modified to suit future developments. Not only does this minimize development costs ahead of commissioning, but it also serves to ensure long-term protection of investments. **VESS** is the ideal solution for all handling service providers required to efficiently schedule the deployment of vehicles and heavy equipment in aircraft handling operations, such as buses, tankers and boarding walkways, and to maximize existing capacity. **VESS** is equipped with the following features:

- Modern Client/Server architecture and multiple scheduling-manager concept
- Familiar and user-friendly, graphical user-interface
- Systematic, ergonomic displays (e.g. flight schedule display, utilization capacity charts)
- Advanced planning of resource allocation and expansion of the operative scheduling horizon over the entire day
- Conflict identification
- Supports Scheduling managers by proposing concrete solution
- Online connection to the central database and automatic update of all connected clients
- Interface to our Contract Management System
- Capture and provision of the performed handling services/special services for further processing in billing system

- Can be integrated into existing and legacy system environment
- Connection to data-radio or paging systems for the passing of work-orders

References

The **AirIT VESS** is deployed in Düsseldorf as a system for scheduling the deployment of buses.

Contact

Corporate Office

Air-Transport IT Services, Inc.
6675 Westwood Blvd. Suite 210
Orlando, Florida 32821 USA
Phone: +1 407-370-4664
Fax: +1 407-370-4657
Email: info@AirIT.com
Website: www.AirIT.com